









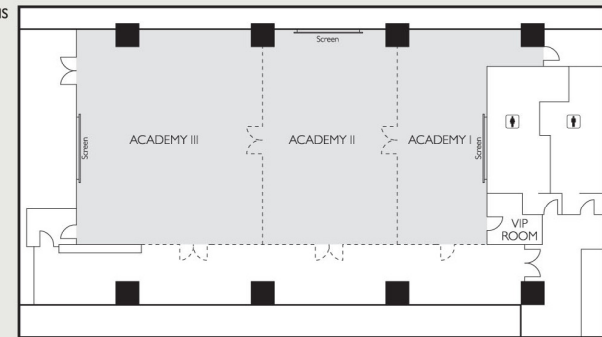


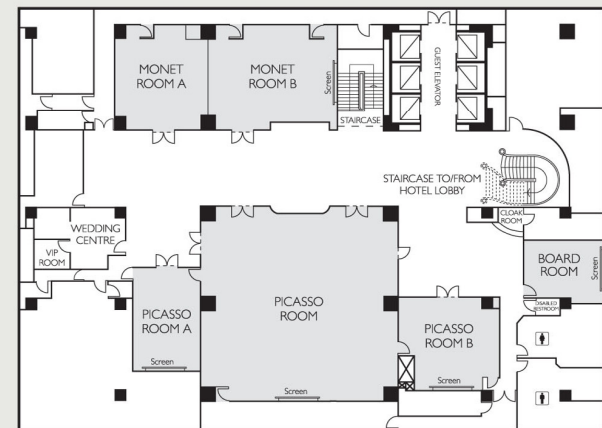
Name of Room	 Theatre Style	 Classroom Style	 Cocktail Reception	 Banquet-Style	 U-Shape	 Conference Style	 Size (Sq. m)	 Size (Sq. ft)	 Length x Width (m)	 Height (m)
	CAPACITIES (PERSONS)						DIMENSIONS			
Academy I	48	20	40	48	20	24	65	697	5.2x12.5	2.8
Academy II	96	40	100	72	26	34	97	1050	7.8x12.5	2.8
Academy III	128	60	160	108	32	42	135	1435	10.8x12.5	2.8
Academy I - II	140	72	150	120	34	44	162	1747	13x12.5	2.8
Academy II - III	240	144	280	240	46	56	273	2928	18.6x14.7	2.8
Academy Rooms	350	192	370	288	58	68	349	3765	23.8x14.7	2.8
Picasso Room	264	128	270	192	50	66	277	2983	16.8x16.5	2.95-5.35
Picasso Room A	40	18	50	24	16	20	51	549	5.8x8.8	2.65
Picasso Room B	40	24	60	36	19	24	65	704	8.5x7.7	2.65
Monet Room A&B	120	80	160	120	46	52	165	1780	18.8x8.8	2.85
Monet Room A	50	32	60	48	20	24	68	739	7.8x8.8	2.85
Monet Room B	70	40	100	72	26	32	96	1042	11x8.8	2.85
Boardroom	-	-	-	-	-	10	34	371	6.5x5.3	2.54
Library	40	24	50	36	20	24	56	612	8.4x6.75	2.64

These dimensions are approximate only

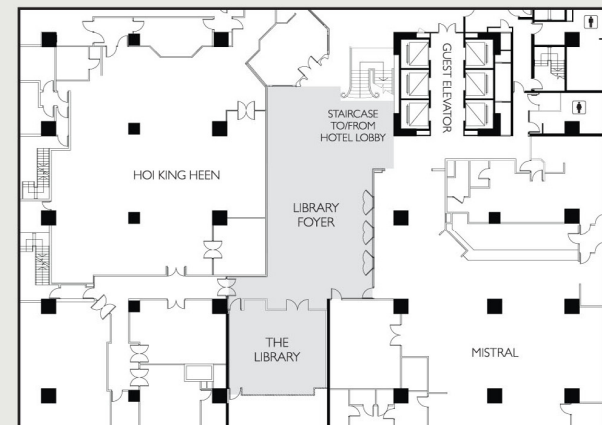
#### ACADEMY ROOMS FIRST FLOOR



#### FORUM ROOMS B1 LEVEL



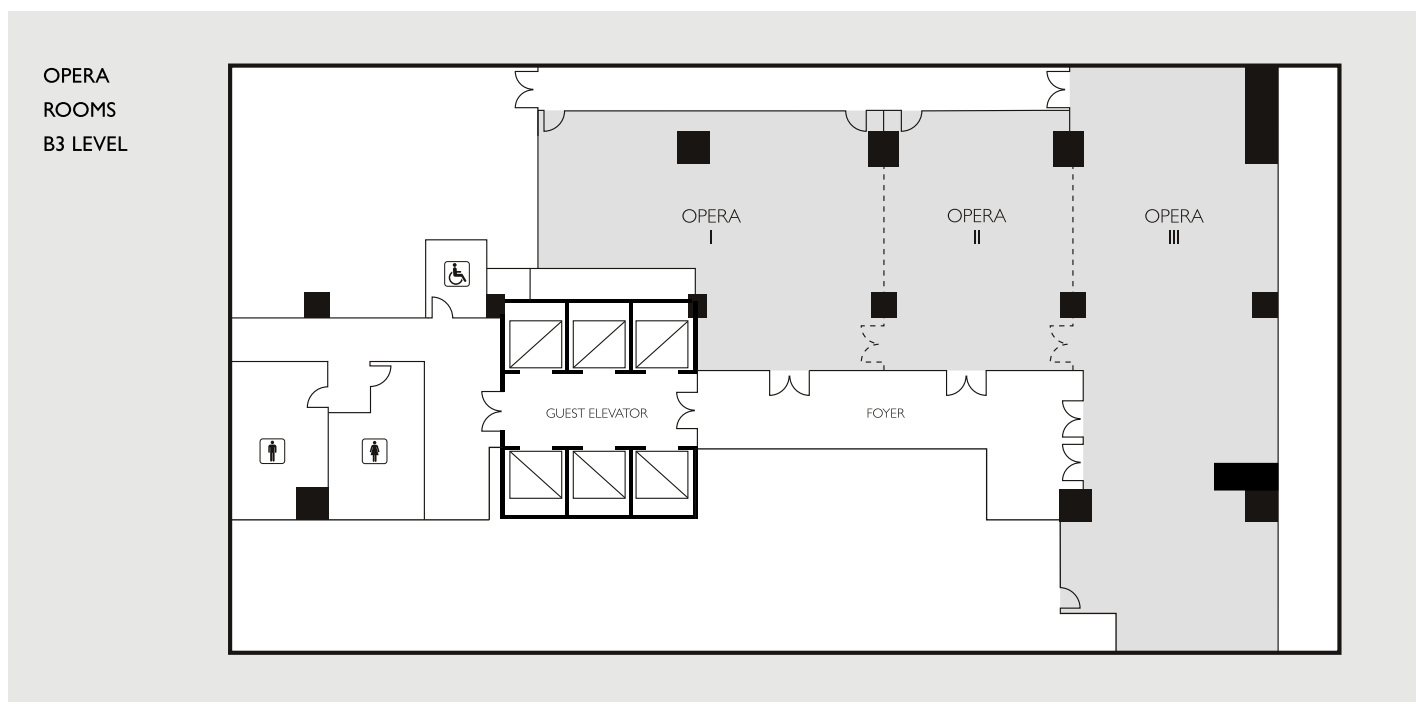
#### LIBRARY B2 LEVEL



# OPERA ROOMS

The brand new meeting space offers a spectacular venue for a variety of occasions, ranging from small meetings, intimate gatherings, press conferences, new product launches to grand wedding celebrations and other entertainment possibilities. Our dedicated meeting consultant will cater to each and every detail of your activity and set the stage for a stress-free event.

The versatile meeting space can be divided into three individual venues using soundproof partitions and boasts a foyer that is ideal for welcoming guests or staging a pre-event cocktail reception. It is also equipped with state-of-the-art facilities, cutting-edge lighting and audio-visual technology that would just be perfect for all levels of private and corporate functions.



Name of Room										
	Theatre Style	Classroom Style	Cocktail Reception	Banquet-Style	U-Shape	Conference Style	Size (Sq. m)	Size (Sq. ft)	Length x Width (m)	Height (m)
	<b>CAPACITIES (PERSONS)</b>						<b>DIMENSIONS</b>			
Opera I	60	24	100	48	20	18	130	1389	17.1x13.4	2.8
Opera II	60	24	60	36	20	18	98	1054	10.7x6.9	2.8
Opera III	110	42	150	84	36	30	218	2158	23x8.2	2.8
Opera I - II	124	56	160	108	34	30	228	2453	10.7x15	2.8
Opera II - III	180	66	180	144	36	30	316	3212	33.7x15.1	2.8
Opera Rooms	200	90	200	168	52	54	446	4601	40.1x29.7	2.8

These dimensions are approximate only